

K. A. U. TODAY



DIRECTORATE OF EXTENSION
KERALA AGRICULTURAL UNIVERSITY
MANNUTHY, THRISSUR 680 651

English

K. A. U. TODAY

First Edition: November 1984: 1000

Second Edition: April 1987: 5000

Revised Edition: July 1991: 3000

*Revised and Edited by
Jose Joseph*

Published by

*Dr. A. G. G. Menon
Director of Extension
Kerala Agricultural University
Mannuthy 680 651, Thrissur, Kerala*

Printed at

*Kerala Agricultural University Press
Mannuthy*

Cover: V. Chandranandan



810165

IR KAU/TC

K A U TODAY

The Kerala Agricultural University, established under the KAU Act 33 of 1971, started functioning on 1st February, 1972. It is fifteenth in the series of Agricultural Universities in India.

The main objects of the University as per the Act are to "(1) make provision for imparting education in different branches of study, particularly in agriculture, horticulture, animal husbandry including veterinary and dairy science, co-operation, fisheries, forestry, agricultural engineering, home science and other allied branches of learning and scholarship; (2) furthering the advancement of learning and prosecution of research, particularly in agriculture and other allied sciences; (3) undertaking an extension education programme; and (4) such other purposes as the University may from time to time determine".

Territorial jurisdiction

With respect to teaching at the University and College level and research and extension education programmes in the field of agriculture, the territorial jurisdiction and responsibility of the University extend

to the entire state. The main campus of the University is located at Vellanikkara, 10 km east of Thrissur town on the National Highway (NH-47) in an area of 379.56 ha. The College of Horticulture and the College of Forestry are located in the main campus. Kerala Agricultural University has five other teaching campuses-the College of Agriculture at Vellayani (Thiruvananthapuram District), the College of Fisheries at Panangad (Ernakulam District), the College of Veterinary and Animal Sciences and the College of Co-operation and Banking at Mannuthy (Thrissur District) and the Kelappaji College of Agricultural Engineering and Technology at Tavanur (Malappuram District).

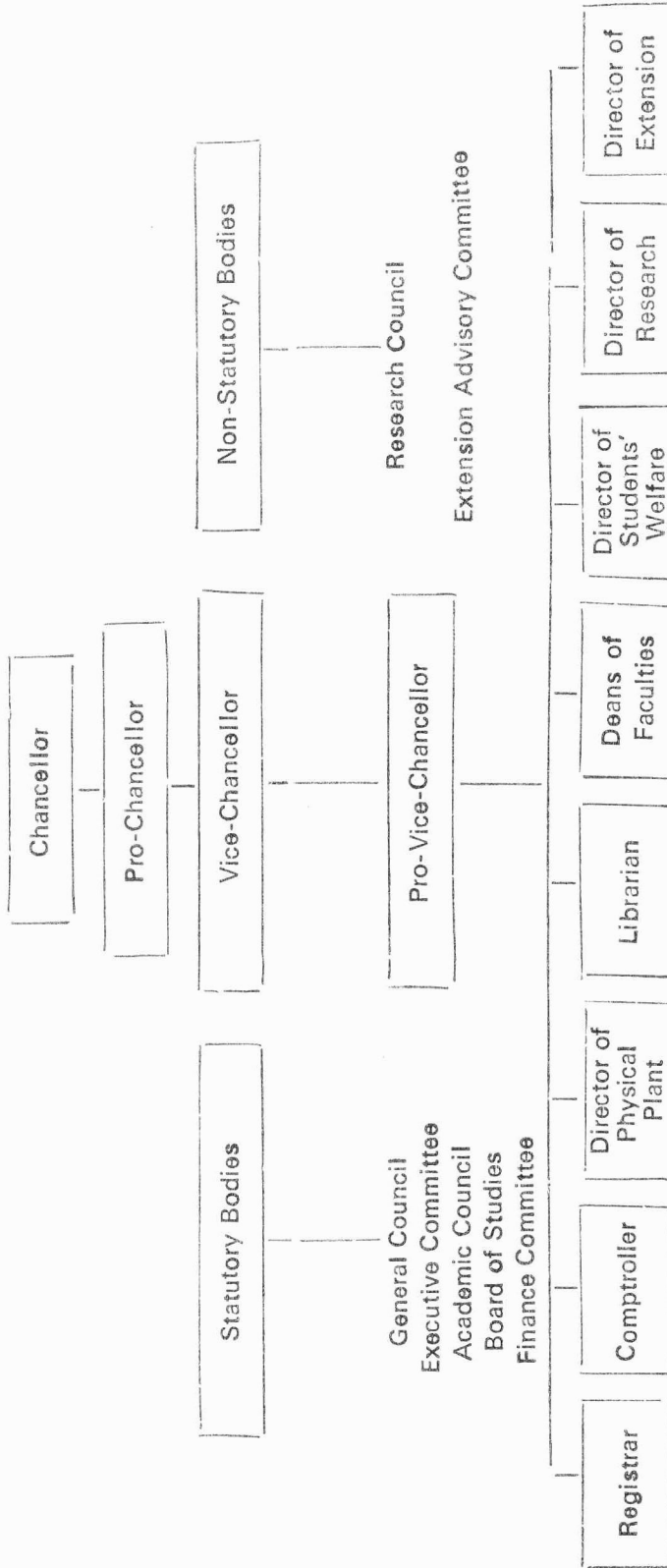
Besides, the University has 23 research stations spread over the entire state.

Organisational set up

The Governor of Kerala is the Chancellor of the University and the State Minister for Agriculture is the Pro-Chancellor. The Vice-Chancellor is the principal executive and academic head exercising general control over all

Fig. 1

ORGANISATIONAL SET UP OF KERALA AGRICULTURAL UNIVERSITY



aspects of functioning of the University. He is the ex-officio chairman of the Executive Committee and the Academic Council and presides over the General Council in the absence of the Chancellor and Pro-Chancellor. He is also the Chairman of the Research Council, Research Advisory Committee and Extension Advisory Committee.

The General Council is the supreme authority of the University and the Executive Committee is the chief executive body. The General Council has 21 ex-officio members, 21 elected members; 24 nominated members and three representatives of the senates of the Calicut, Cochin and Kerala Universities.

The Executive Committee comprises of the Vice-Chancellor, the three Government secretaries in the General Council, the ICAR representative in the General Council, one member each elected from the teachers other than the Deans, Students and Deans of faculties in the General Council and five non-official members elected by the General Council

including one member each of Scheduled Caste/Scheduled Tribe and women.

The Vice-Chancellor is assisted by the Director of Research on research administration, Director Extension on extension education and the Deans of faculties on academic matters. He is assisted by the Registrar and Comptroller of the University in general administration and financial matters, respectively. The Director of the Physical Plant is the head of the engineering wing of the University. The students welfare programmes are co-ordinated by the Director of students' welfare.

Besides the General Council and the Executive Committee, the Academic Council, the Board of studies of Faculties and the Finance Committee are the other statutory bodies of the University. Academic Council is responsible for the maintenance of academic standards of institutions in the different faculties of the University. Board of studies of each faculty has an advisory role so as to maintain the academic standards.

□

TEACHING

The courses offered in various teaching campuses of University under different faculties are as follows:

Faculty of Agriculture

Academic Programmes are conducted at the College of Agriculture, Vellayani, 695 522, Thiruvananthapuram District, College of Horticulture, Vellanikkara, 680 654, Thrissur District, College of Forestry, Vellanikkara—680 654, Thrissur District and College of Co-operation and Banking, Mannuthy-680 651, Thrissur District.

U. G. Programmes

B Sc (Agriculture)	— 150 seats
B Sc (Forestry)	— 10 seats
B Sc (C & B)	— 20 seats

P. G. Programmes

Ph. D programme is offered in the following disciplines with intake capacity indicated against each.

Agronomy	— 2
Agricultural Botany	— 2
Agricultural Extension	— 2
Agricultural Entomology	— 2
Horticulture	— 4
Plant Breeding	— 1
Plant Pathology	— 2
Soil Science and Agricultural Chemistry	— 2
Food Science and Nutrition	— 2

Masters programme is offered in the following disciplines with intake capacity indicated against each:

Agronomy	— 12
Agricultural Botany	— 4
Agricultural Economics	— 6

Agricultural Entomology	— 5
Agricultural Extension	— 7
Agricultural Statistics	— 4
Horticulture	— 12
Plant Breeding	— 4
Plant Pathology	— 6
Soil Science and Agricultural Chemistry	— 12
Food Science and Nutrition	— 6
Forestry	— 4
Co-operation and Banking	— 4

P. G. Diploma Courses are offered in plant protection, food and nutrition, soil science, natural rubber production and land and water resources management.

Faculty of Veterinary and Animal Sciences

Academic programmes are conducted at the College of Veterinary and Animal Sciences, Mannuthy-680 651, Thrissur District.

U. G. Programme

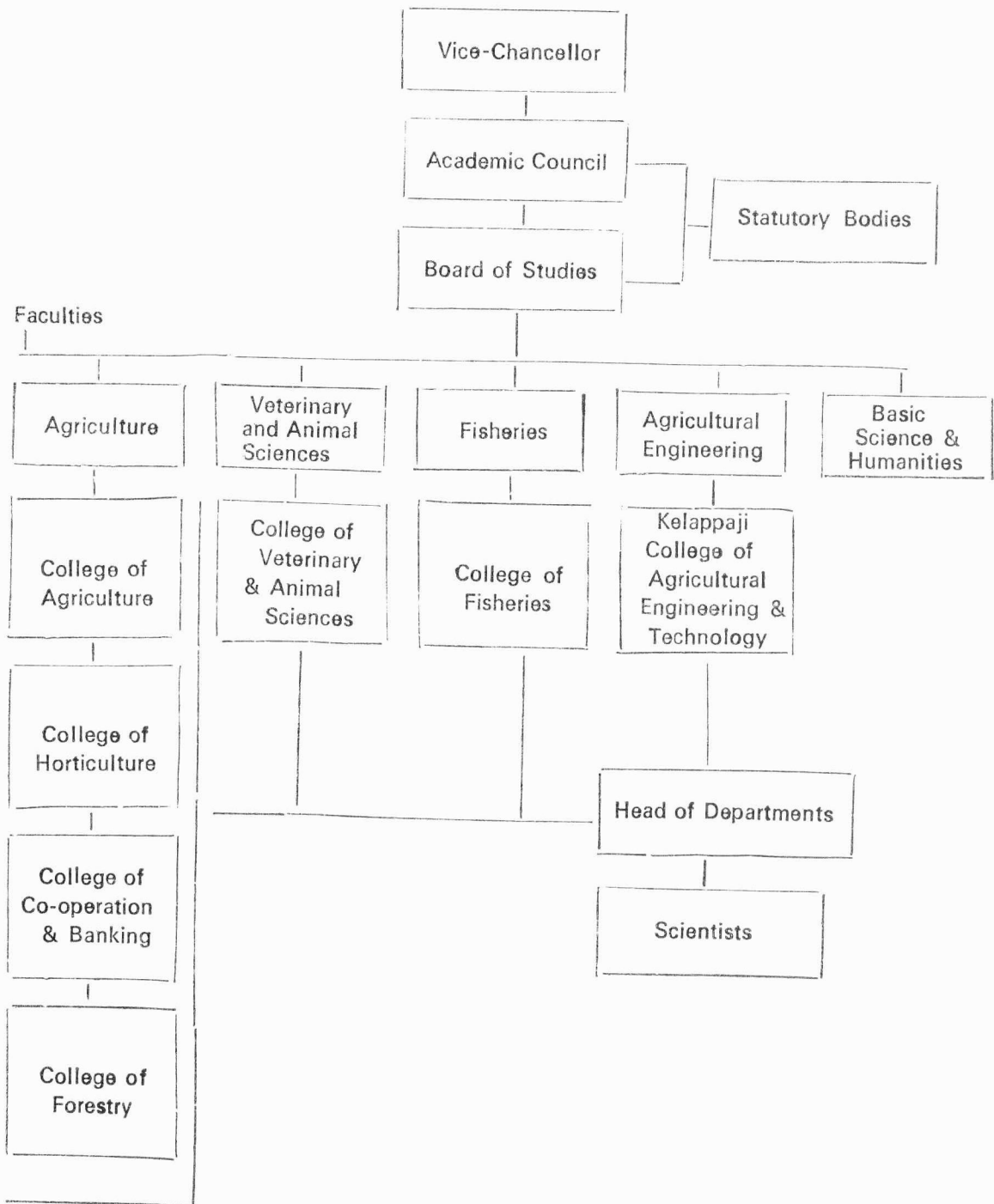
BVSc and AH	— 100 seats
-------------	-------------

P. G. Programmes

Ph. D. programme is offered in Animal Breeding and Genetics, Animal Reproduction, Dairy Science, Livestock production Management, Microbiology, Nutrition, Parasitology, Pathology, Physiology and Poultry Science with intake capacity of two seats each.

Masters programme is offered in Anatomy, Animal Breeding and Genetics, Animal Reproduction, Clinical Medicine,

Fig. 2
ACADEMIC ORGANISATION IN KERALA AGRICULTURAL UNIVERSITY



Dairy Science, Extension, Livestock production Management, Microbiology, Nutrition, Parasitology, Pathology, Pharmacology, Physiology, Poultry Science Preventive Medicine, Surgery and Veterinary Public Health with intake capacity of four seats each.

P. G. Diploma programme is offered in the subjects of Animal Management (Livestock production Management), Animal Reproduction, Microbiology, Pathology, Poultry Science and Dairy Science.

Faculty of Fisheries

Academic programmes are conducted at the College of Fisheries, Panangad-682 506, Ernakulam District.

U. G. Programme

BFSc — 20 seats

P. G. Programmes

Masters programme is offered in the disciplines of Aquaculture, Fish Processing and Fisheries Extension.

Faculty of Agricultural Engineering and Technology

Academic programmes are conducted at the Kelappaji College of Agricultural Engineering and Technology, Tavanur-679 573, Malappuram District.

U. G. Programme

B. Tech (Agrl.Engg.) — 30 seats

P. G. Programmes

Masters programme is offered in the disciplines of Farm Power Machinery and Soil and Water Engineering.

Diploma programmes

Diploma in Agricultural Science (DASc)

Diploma in Agriculture and Rural Engineering (DARE)

Students' Welfare

The Directorate of Students' Welfare functioning at the Head quarters of the University co-ordinates the extra-curricular activities of the students of all faculties of Kerala Agricultural University and few of the co-curricular activities. The extra-curricular activities are co-ordinated through the Physical Education teachers. The R & V NCC Squadron of KAU has a strength of 120 cadets including 16 girls.

University Employment Information & Guidance Bureau

The University Employment Information and Guidance Bureau is functioning since December, 1979. This Bureau was established with a view of giving all possible employment assistance and guidance to the students/alumni of the Kerala Agricultural University. In addition to the monthly Employment Information Bulletin published by the Bureau, it also organises career guidance seminars for the benefit of the student community.

National Service Scheme

National Service Scheme started functioning from the year 1975-76 in the KAU with a total student allotment of 300 in three units one each at the College of Agriculture, Vellayani, College of Horticulture, Vellanikkara and College of Veterinary and Animal Sciences, Mannuthy. The strength of the NSS volunteers has increased to 1225 since 1985-86 with 10 units—two at the College of Horticulture, Vellanikkara, two at the College of Agriculture, Vellayani, two at the College of Veterinary and Animal Sciences, Mannuthy and one each at the College of Co-operation and Banking Mannuthy, College of Forestry, Vellanikkara College of Fisheries, Panangad. and Kelappaji College of Agricultural Engineering and Technology, Thavanur.



The exciting activities undertaken by the National Service Scheme units provide new dimensions of social experience to the undergraduate students.

The various units of the NSS are chalk-ing out programmes of social service and national development with special emphasis on programmes of rural reconstruction and activities aimed at the improvement of conditions of the life of the economically and socially weaker sections of the society.

In addition to undertaking programmes like construction and repair of village roads, nutrition gardens and consultancy services to farmers, NSS students participate in programmes like environmental conservation,

health and family welfare and social service in emergency situations.

As part of the involvement of students in vacation periods in constructive social work, special camping programmes are being regularly organised by the various NSS units. These special camps cover some of the local needs of the village people in remote sites.

The Director of Extension is the university level programme co-ordinator of the NSS.

△

RESEARCH

Research projects are implemented in the Research Stations and in the various Departments of the Colleges. The Faculty Research Committees are functioning in each of the constituent faculties. The main function of the FRC is to advise the University on the implementation of research projects. It provides advice on the research policy for the faculty, fixation of priorities for research programmes and directions to project co-ordinators and scientists on research project formulation, besides reviewing the out put from research projects. All the research projects are to be approved by the FRC before implementation.

The Project Co-ordination Groups are functioning in the faculties to serve as sub-committees of the FRC. The primary task of the project co-ordination group is to process, scrutinise and suggest modifications, wherever necessary in the technical programmes of research projects.

The University undertakes fundamental, applied and adaptive research to develop efficient technologies for the establishment of economic agro-livestock and fisheries farming systems suitable for the homestead and other farming situations of Kerala. In order to concentrate research in the selected areas, thrust areas of research have been identified in various faculties of the University. This include research on homestead farming, cropping systems, spices and fruit crops, post harvest technology, integrated farming involving crop livestock and fish, mangrove management, agroforestry, resource management and bio-technology.

While solutions to farming problems are worked out, their feasibility for field adoption in the socio-economic and psychological context of farming community receives adequate attention.

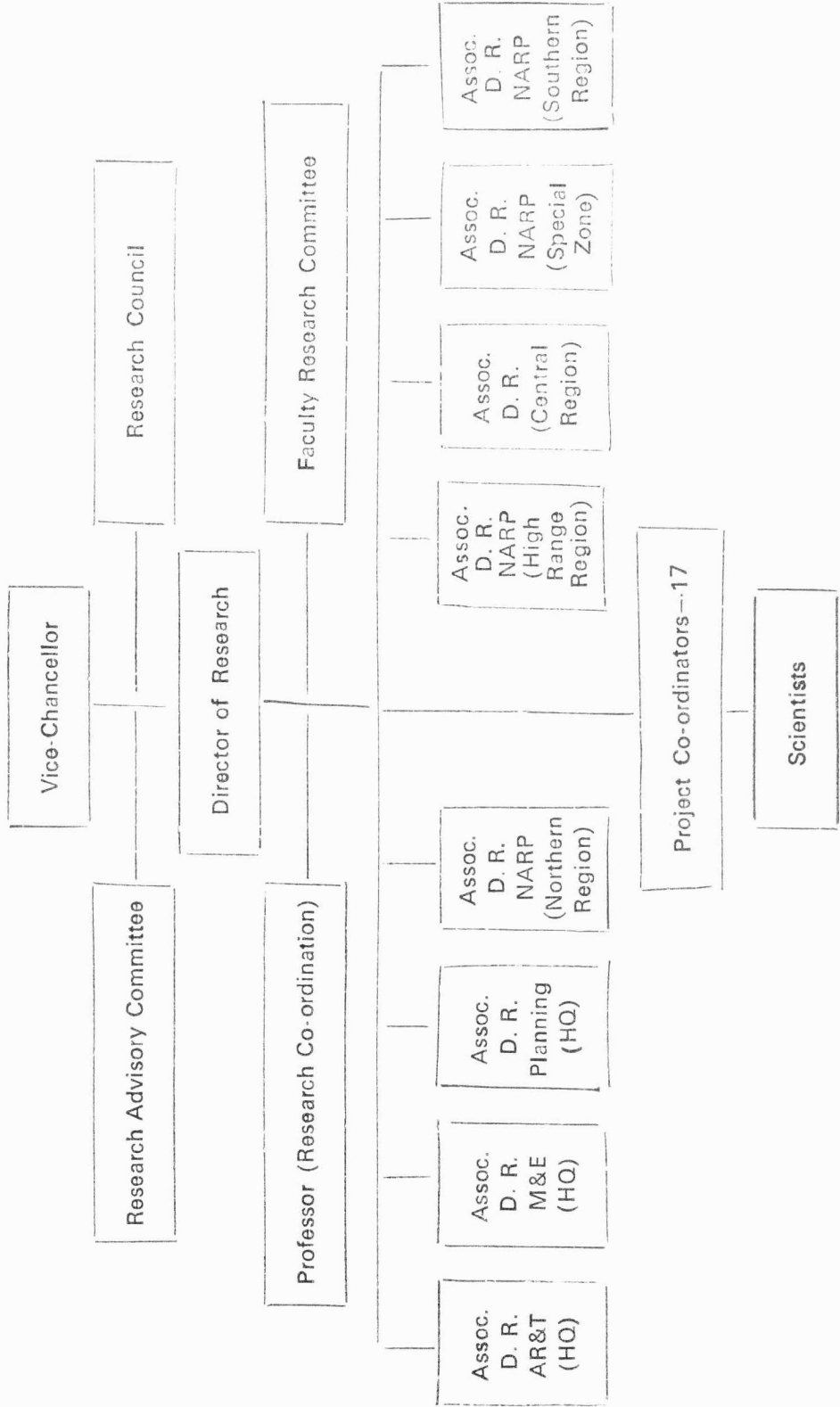
National Agricultural Research Project (NARP)

To conduct location specific, production oriented research in the different agro-climatic zones in the State, the research efforts of the University are channelised through the Regional Agricultural Research Stations under the National Agricultural Research Project. The research work is undertaken in the regional stations, on the basis of the felt needs of the farming community with particular reference to changing situations and shifting priorities. The second phase of the NARP is in operation in the University now. The following are the five Regional Agricultural Research Stations functioning in the University.

- 1 Northern zone
 - Regional Agricultural Research Station, Pilicode-670 351 Kasargod District.
- 2 Central Zone
 - Regional Agricultural Research Station, Pattambi-679 306 Palakkad District.
- 3 Southern Zone
 - College of Agriculture, Vellayani-695 522 Thiruvananthapuram District.

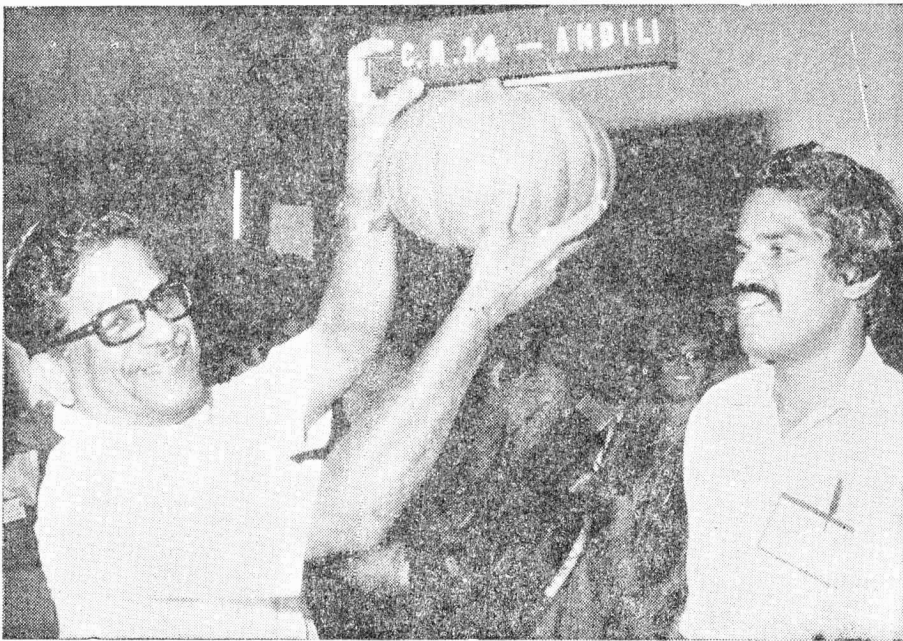
Fig. 3

ORGANISATIONAL PATTERN OF RESEARCH IN KERALA AGRICULTURAL UNIVERSITY





The Pepper Research Station at Panniyur has developed new high yielding varieties of the most popular spice crop in the world



Ambili (CM-14), a new high yielding pumpkin variety from KAU has been recommended for cultivation in all the major vegetable growing tracts of the country



New high yielding varieties of paddy developed by the University form the major plank of strategy for increasing rice production in the state

- | | |
|---|--|
| <p>4 Special Problem Area Zone
— Regional Agricultural Research Station, Kumarakom-673 566, Kottayam District.</p> <p>5 High Range Zone
— Regional Agricultural Research Station Ambalavayal-673 593, Wynad District.</p> | <p>3 Cardamom Research Station, Pampadumpara 685 556, Idukki District</p> <p>4 Rice Research Station, Kayamkulam-690 502, Alappuzha District</p> <p>5 Research Centre on Agricultural Drainage, Karumadi-686 654, Ambalapuzha, Alappuzha District</p> <p>6 Sugarcane Research Station, Thiruvalla-689 101, Pathanamthitta District.</p> <p>7 Rice Research Station, Moncompu, Thekkekkara-688 503, Alappuzha,</p> <p>8 Rice Research Station, Vyttila, Kochi-682 019, Ernakulam District.</p> <p>9 Aromatic & Medicinal Plants Research Station, Asamanoor, Odakkali-683 544 Ernakulam District.</p> |
|---|--|

Research Stations

Research stations under the Kerala Agricultural University which are functionally attached to the Regional Agricultural Research Station concerned are as follows:

- 1 Coconut Research Station, Balaramapuram, Kattachalkuzhi P.O. 695 509. Thiruvananthapuram District.
- 2 Cropping System Research Station. Karamana-695 002. Thiruvananthapuram District.



810165



"Rabbit is rich"—the University has popularised rabbit rearing as a profitable enterprise among the farmers

- | | |
|---|---|
| 10 Agronomic Research Station,
Chalakudi-680 354, Thrissur District | 15 Cashew Research Station, Anakkayam,
Panayil-676 516, Malappuram District. |
| 11 Agricultural Research Station,
Mannuthy-680 651, Thrissur District. | 16 Sugarcane Research Centre,
Menonpara, Chittoor-678 656,
Palakkad District. |
| 12 Banana Research Station, Marackal,
Kannara-680 653, Thrissur District. | 17 Pepper Research Station, Panniyoor,
Taliparamba-670 141, Kannore District. |
| 13 Cashew Research Station,
Madakkathara, Vellanikkara-680 654
Thrissur District, | 18 University Livestock Farm, Mannuthy-
680 651, Thrissur District. |
| 14 Pineapple Research Centre,
Vellanikkara-680 654, Thrissur District | 19 University Poultry and Duck Farm,
Mannuthy-680 651, Thrissur District. |



Development of new technologies in fish culture is a thrust-area of research by the University



"Made for each other and the egg eating humanity" The high egg production hybrid layer strain IWN x IWP evolved at the AICRP Mannuthy centre has a potential of producing 280 eggs per annum.

- 20 University Pig Breeding Farm.
Mannuthy-680 651, Thrissur District.
- 21 Cattle Breeding Farm, Thumburmuzhi-
680 721, Thrissur District
- 22 Livestock Research Station,
Thiruvizhamkunnu-678 607,
Mannarkkad, Palakkad District.
- 23 ORP Centre on Watershed Manage-
ment, Ozhalapathy, Kozhinjanpara,
Palakkad District.

In addition to these, Instructional Farms are maintained at Vellayani, Vellanikkara, Thavanur and Panangad campuses and a Fisheries Station at Puthuvaypu to help the academic programmes.

Centre for Advanced studies

There are at present two centres for advanced studies functioning in the Faculty of Agriculture and four in the Faculty of Veterinary and Animal Sciences.

Centre for Advanced Studies in Humid Tropical Tree crops and Environmental Horticulture (under review)

Started at the Main Campus of the University, this Centre proposes to strengthen the research including Post-graduate research in the identified areas like tree physiology, tree nutrition, tree breeding, tree propagation and environmental consequences on production.

Centre of Excellence for Tropical soils (under review)

This centre was started at the Vellayani Campus to carry out systematic studies on the different soil groups of the humid tropical regions of South India, with special reference to their formation, morphology, physio-chemical properties and response to agro-chemicals and management practices so as to enhance our knowledge of these soils.

Centre for Advanced Studies in Poultry Science

Established at the College of Veterinary and Animal Sciences at Mannuthy, this centre aims at co-ordinating the Poultry Science education, research and extension education aspects and also at identifying and implementing research programmes that have practical application.

Centre for Advanced Studies in Animal Genetics and Breeding

Started at the College of Veterinary and Animal Sciences, Mannuthy, this centre proposes to identify research in cytogenetics, immunogenetics, population genetics, germplasm conservation, mutation studies and genetic engineering and embryo transfer.

Centre of Excellence for Research in Animal Diseases (under review)

Started at College of Veterinary and Animal Sciences at Mannuthy this Centre aims mainly at setting up a multidisciplinary disease investigation surveillance system, capable of attending to the needs of the entire state.

Centre of Excellence in Pathology

The Department of Pathology in the College of Veterinary and Animal Science was upgraded to the status of a Centre of Excellence. The Centre is offering MVSc and Ph. D. programmes. The centre undertakes regular diagnostic service. Mycotoxicosis, Hypothyroidism, Animal Cancer and diseases of Poultry are taken as priority areas for research.

Project for the promotion of Agricultural Electronics

A pilot project for the promotion of agricultural electronics, funded by the Department of Electronics and co-ordinated by the Indian Council of Agricultural Research is functioning at Vellanikkara,

Thrissur District. The objectives of the project are to test simple to use, reliable, rugged and easy to carry agri-electronic instruments, to take them to farmers' doorsteps, to carryout analysis and to give recommendations on the spot. It also aims at developing new agri-electronic equipments through research and development. The operational area of the project is spread over 24 Panchayaths in three blocks viz. Trithala and Alathoor in Palakkad District and Puzhakkal block in Thrissur District.

USDA Project on tissue culture

A research project on tissue culture, financed by the United States Department of Agriculture is in operation at the College of Agriculture, Vellayani, Thiruvananthapuram. The project envisages the standardisation of tissue/apical and cultural techniques in horticultural crops of Kerala including cashew and nutmeg.

Research projects on the standardisation of tissue culture techniques of important horticultural crops of Kerala are also being undertaken at the Department of Plantation crops, College of Horticulture, Vellanikkara.

Facilities for Research

With a view to strengthen the research facilities available to the scientists

of the University, a central Instrumentation laboratory has been established at the Main Campus of the University in the College of Horticulture, Vellanikkara. The laboratory possesses some of the most modern analytical instruments.

A computer centre has been set up in the University Headquarters at Vellanikkara. Terminal units of the computer centre are also available in the major campuses of the University.

An electron microscope has been established at the College of Veterinary & Animal Sciences for advanced studies in plant and animal sciences.

In the Radio Tracer Laboratory at Vellanikkara, research work with beta emitters and gamma emitters can be undertaken. Auto-radiographic facilities and Gamma irradiation facility are also available.

There is a full fledged class I Meteorological observatory at the Main Campus, Vellanikkara. Synoptic observations are taken and supplied to the Meteorological centre at Thiruvananthapuram at 0830 and 1730 hr. every day. Out of the 23 University farms, 13 are having meteorological stations.



EXTENSION EDUCATION

The basic objective of the extension education programme of the University is to make, useful information based upon the findings of research, available to the farmers and others through the Government Departments concerned. The extension education activity of the University are implemented through the Communication Centre, Farm Advisory Service, Central Training Institute, Advanced Centre of Training in Plantation Crops, Krishi Vigyan Kendras, National Demonstration Scheme, Scheduled Caste Area Research Centre, Tribal Area Research Centre lab to land and land to lab programmes and Village Adoption Programme. In addition, the educational institutions and research stations of the University are also implementing extension education programmes.

Communication Centre

The Communication Centre at Mannuthy comprises of the Publication Unit, Information Unit and Exhibition and Graphic Service Unit.

i) Publication Unit

The Publication Unit brings out a number of publications on various topics in agriculture and allied fields. Free publications as well as priced ones, both in Malayalam and in English, categorised under text books, monographs, books, booklets, technical bulletins, pamphlets and leaflets are published from here. The semi-technical farm magazine 'Kalpadhenu', a quarterly in Malayalam and two scientific journals, namely, Agricultural Research Journal of Kerala and Kerala Journal of Veterinary Science published every 6 months are the major

periodicals brought out. Farm News periodical 'Agres News' containing abstracts of new research reports is also being released as a quarterly for the benefit of the research and extension workers. The printing requirements of the University are met by the KAU Press.

ii) Information Unit

The Information Unit of the Communication Centre provides new knowledge to the farmers through various programmes arranged and broadcast over All India Radio and telecast over "Doordarshan". Questions from farmers are answered through direct mail and newspapers. Feature articles are published in leading English and Malayalam dailies in their Agricultural Column.

iii) Exhibition & Graphic Service Unit

The University participates in the major exhibitions conducted in the State such as Flower and Vegetable shows and Thrissur Pooram exhibition. Mini exhibitions are also conducted as part of the Seminars in rural areas.

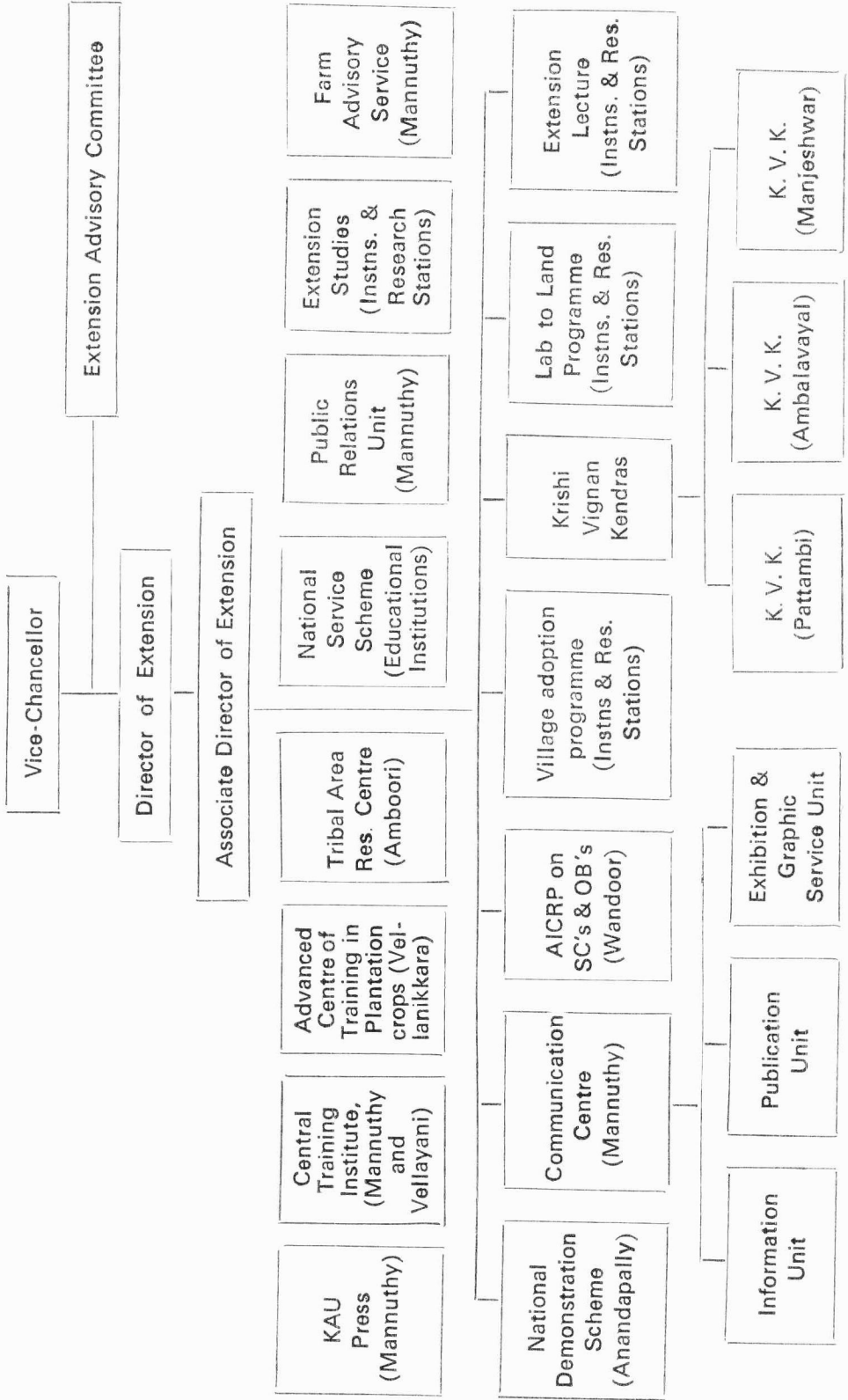
Educational technology support is provided to the Development Departments in the State by the Communication Centre.

Farm Advisory Service

The Farm Advisory Service is the field wing of the Directorate of Extension. Regional/District level Seminars are organised and conducted throughout the State by the FAS in collaboration with the various development departments, co-operative institutions, local bodies, village institutions and input firms.

Fig. 4

ORGANISATIONAL PATTERN OF EXTENSION EDUCATION IN KERALA AGRICULTURAL UNIVERSITY





Exhibitions for education—The University participates in all the major exhibitions conducted in the state

Village Adoption programme

The Farm Advisory Service also implements the Village Adoption Programme of the University. This has helped to establish a close liaison between research personnel and farmers providing feed back of field problems for carrying out further research and to test the suitability and profitability of new technology under field conditions. The adopted villages function as 'field laboratories' of the University. Front-line demonstrations and adaptive trials/farm trials are conducted in these villages. 'Farm clinics' have also been established as part of the Village Adoption Programme.

Lab to Land & Land to Lab programmes

The University is implementing the lab - to - land programme of the ICAR selecting and adopting small and marginal farmers and landless

labourers belonging to the weaker sections of the community. Critical inputs are supplied to the beneficiaries on the basis of bench mark surveys and production plans formulated to help them adopt new technologies as so to increase production per unit area per unit time and to increase net income of the farm family. The land to lab programme sponsored by the ICAR is also implemented by the University to collect feed back from the farmers.

Krishi Vigyan Kendras

Three Krishi Vigyan Kendras are functioning under the University; two financed by the ICAR at Pattambi and at Ambalavayal. The one at Manjeswar is run with University funds for the benefit of the Kannada speaking linguistic minorities. They impart short term training courses for farmers, farm youths and farm women to develop skills in agricultural practices.



The innovative extension model of group management in rice farming devised by the University under the lab to land programme has paid very rich dividends

Central Training Institute

A Central Training Institute at Man-nuthy with a Training Service scheme at the College of Agriculture, Vellayani came into being in 1986 as a special sub project of National Agricultural Extension Project-1 primarily to meet the training needs of the higher level functionaries of the State Department of Agriculture. A Training unit at the Regional Agricultural Research Station, Pilicode also conducts training programmes. Training programmes are conducted at selected Research Stations of the University also.

Apart from the training programmes conducted for the State Department of Agriculture, training programmes are also conducted for higher officers of the other development departments such as Animal Husbandry, Rural Development, Dairy

Development, Fisheries, Forestry, Commodity Boards of the Government of India, Agrl. Departments of various States in India, workers of voluntary agencies etc.

Advanced Centre of Training in Plantation Crops

A national level advanced centre of Training in Plantation Crops was established with the financial support of the Government of India in 1990 with the objective of providing of technical backstop to the experts of State Departments of Agriculture, Horticulture, Commodity Boards etc. in plantation crops by organising advanced training programmes in plantation crops technology. The centre organises national level and regional level seminar-cum-workshops on policy and planning for policy makers, senior officials, Marketing Managers, Directors

of Research, Directors of Agriculture/Horticulture, Bankers, and Scientists of ICAR. The centre is serving as a National Institute for training in plantation crops, meeting the requirements of all the states in the country.

National Demonstration Scheme

The National Demonstration Scheme of the University financed by ICAR functions at Anandappally near Adoor in Pathanamthitta District. Under this scheme demonstration plots are laid out in farmer's fields to educate the farmers on the production potential of the new agricultural technology coming from the research stations.

Distance Education

The Distance Education programmes of University include correspondence courses and the farm school on AIR.

Public Relations

Public Relations is an integral part of the extension function of the University. Regular press releases are issued on various development programmes and research results through the media. A house journal 'KAU Newsletter' is also brought out regularly.

Horticultural Therapy project

Horticultural Therapy project started in 1984 is yet another novel extension project of KAU. At present it is in operation at 3



Horticultural therapy, a novel extension project for the rehabilitation of the physically and mentally handicapped persons is in operation at three centres in the state



The University centres at Amboori and Wandoor and KVK Ambalavayal undertake special extension programme for the promotion of the educational and economic interests of scheduled castes, scheduled tribes and other weaker sections of the society

centres viz. Pope Paul Mercy Home, Perungandur near Thrissur, Polio Home and Cheshire Home, Thiruvananthapuram. The objective of the project is to help the rehabilitation of the mentally and physically handicapped persons through the cultivation of horticultural plants especially fruits, vegetables and ornamental plants. All the operations in the cultivation of plants right from sowing to harvesting are used as therapeutic tools to give physical exercise or mental pleasure or both.

Tribal Area Research Centre

The University has established a Tribal Area Research Centre at Amboori on the eastern bank of the Neyyar Dam reservoir in Thiruvananthapuram district. This centre financed by ICAR, with schemes financed by the Ministry of Home affairs and the Department of Environment, Government of India is aimed at enhancing the net

income of Kanikkar tribal families by improving their farm and home practices and by generating additional employment.

SC and OBC Centre

The ICAR sponsored 'All India Co-ordinated Research Project for Rapid Improvement of Agricultural Technology directed at Socio-Economic uplift of the 'Scheduled Castes and other Backward Communities' is yet another programme for the under privileged classes implemented by the University. This project with its headquarters at Wandoor (Malappuram district) takes up various educational programmes in that backward area for promotion of agriculture and allied fields, better hygienic practices, household vocation and adult education.

This is in brief the story of 'KAU Today'. But today will soon be tomorrow and the University is planning ahead to meet the fresh challenges of tomorrow.

