

Agri. Res. J. Kerala, 1976 14 (1)

MOSAIC DISEASE OF TRAGIA INVOLUCRATA, LINN.

During October 1975 a large number of the *Tragia involucrata* Linn. plants growing in the Pattambi Rice Research Station Campus were found to be affected by a disease. The symptoms of the disease were light chlorotic patches on the lamina of young and tender leaves. Later severe mottling developed with the appearance of bright yellow patches alternating with green areas. In advance stages, the entire lamina became chlorotic with vein-banding (Fig. 1). The general growth of the plant was affected but the size of the lamina was reduced.

Attempts to transmit the disease by sap inoculations were not successful. But the disease could be easily transmitted to healthy plants by inarch grafting and typical symptoms of the disease were evident in 18 to 20 days after grafting on the newly formed leaves.

Seeds from the diseased plants were collected and sown in pots to determine the seed-borne nature of the pathogen. The results were negative. The disease was transmitted to healthy plants by white-fly (*Bemisia* sp.) and the symptoms appeared within 21 days.

This is a new record of a virus disease of *Tragia involucrata* Linn. Further studies on the host range of the virus and its identity are in progress.

The authors wish to record our sincere gratitude to Dr. M. R. Menon, Professor of Plant Pathology, Agricultural College for going through the manuscript and Dr. R. Gopalakrishnan, Director of Research, Kerala Agricultural University for encouragement.

സംഗ്രഹം

പട്ടാമ്പി നെല്ലുപര്യേഷണ കേന്ദ്രത്തിൽ വളരുന്ന ഒരു കാട്ടുചെടിയായ കൊടുമുളവ (ട്രാജിയ ഇൻവോളക്രേറ്റാ) യുടെ ഇലകളിൽ ഒരുതരം മൊസൈക് രോഗം കാണുകയുണ്ടായി. ഇലകളിൽ മഞ്ഞയും പച്ചയും നിറങ്ങളുള്ള പാടുകൾ ഇടകലർന്നു കാണുന്നതാണ് ഈ രോഗത്തിന്റെ പ്രധാന ലക്ഷണങ്ങൾ. ഇനാർച്ച് ഗ്രാഫ്റ്റിംഗ് എന്നതരം *Bemisia* എന്ന തരം വെള്ളപ്പച്ചി (ബെമീസിയ ബെസിയ) മുഖാന്തിരവും ഈ രോഗത്തെ രോഗബാധയില്ലാത്തതിനുള്ള ചെടികളിലേയ്ക്ക് സംക്രമിപ്പിക്കാമെന്നു കാണുകയുണ്ടായി. കൊടുമുളവച്ചെടികളിൽ ആദ്യമായി റിപ്പോർട്ട് ചെയ്യപ്പെടുന്ന ഒരു വൈറസ് രോഗമാണിത്.

Rice Research Station,
Pattambi, Kerala.

P. K SATHIARAJAN
N. GOPALAN

(M. S received: 2-8.1976)

MOSAIC DISEASE OF INVOLUCRATA, LINN

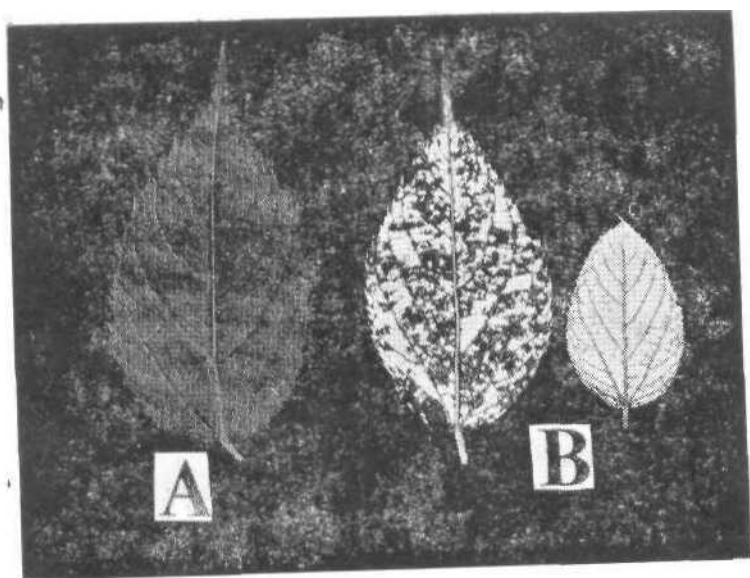


Fig. 1, A Healthy leaf - B Diseased leaves showing symptoms